



WORLDS OF FUN CAMPOUT

Host: Grizzly Patrol

Uniform and Equipment

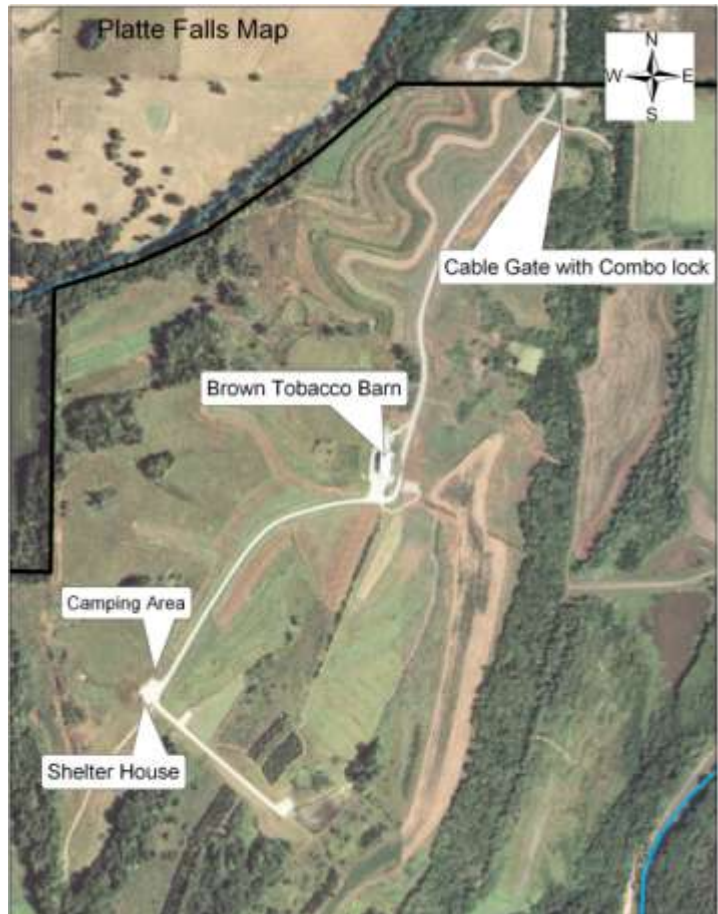
- *Uniform is Class B (Red Ringer or Troop Summer Camp T-shirt, Scout Shorts).
- * Lunch will be planned by Patrol (sack lunch, picnic lunch, or purchase at Worlds of Fun).
- *Communication will be by Cell Phone....exchange numbers prior to departure.

Worlds of Fun Coordinating Instructions:

- * Worlds of Fun cost is **\$25** per Scout or adult. No cost for camping at Platte Falls Conservation Area.
- *Patrols need a final Worlds of Fun roster turned in by the end of the meeting on Monday, September 12. This ensures the \$25 rate. Anyone who commits by September 12 gets the \$25 rate, all others will have to purchase their own tickets. The normal rate is \$45 per person, but discounted tickets are available at many outlets.
- *Tickets will be purchased by the troop on Tuesday, September 13 based off of the signup list.
- * Carpooling to WOF will save money: Parking is \$12 per vehicle.
- * If any Patrols will have Scouts that are dropped off, there is no parking fee. Ensure adult coverage (2 deep per Patrol).
- * Adult leaders that drive to WOF must get the lock combination to access the Platte Falls gate.

Platte Falls Coordinating Instructions:

- * Campers that do NOT attend Worlds of Fun will drive directly to Platte Falls Conservation Area.
- * Adults that do not attend Worlds of Fun will begin Troop Trailer inventory and equipment inspection.
- * Camping area access is through a locked gate, we have the combination.
- * Platte Falls CA is managed for hunting; dove and archery deer seasons will be open during this campout. Even though we are a safe distance away from normal hunting fields, try to dress in bright clothes for the campout.
- * Use of fully automatic weapons, armor piercing rounds, explosive devices, incendiary devices or tracer rounds is prohibited for all users unless specifically authorized herein by range management. (sorry, that was item #6 on the Special Use Permit- I had to put that on here). **NO FIREARMS OR AMMUNITION ALLOWED ON THIS CAMPOUT.**
- *Scouts and Adults should plan on eating breakfast on their own before departure Saturday morning.
- *Patrols will plan lunch at the park, a Patrol dinner Saturday night, as well as breakfast Sunday morning.
- *There is a parking lot, a couple of fishing ponds, a lolly, and a pavilion for our use.
- *The only authorized open fire will be in a fire ring. There is currently only one fire ring, we have asked for three more. There is no firewood available near the campsite, haul some in.
- *Cooking will be on troop stoves and dutch ovens.
- *Suitable Patrol campsites will be along the entrance road and down by the ponds.
- *The adult camping area will be the pavilion and surrounding area.



Routes:

-Everyone should know how to get to Worlds of Fun. We will convoy from the church on Saturday morning just in case.

-From Worlds of Fun to Platte Falls Conservation Area:

1. Take the ramp onto **I-435 N** go 19.4 mi
2. Merge onto **I-29 N** go 6.6 mi
3. Take exit 20 - MO-273/ 371 North of Platte City go 0.2 mi
4. Turn right onto Elm Grove Rd go 1.5 mi
5. Turn right onto Sharp's Station Rd go 1.7 mi
6. Turn right onto Settle Station Rd go 1.3 mi
7. Final Approach: When you get onto the Platte Falls Conservation Area, there will be a gravel parking lot on your left. Turn into the parking lot and look for a gate on the far right side. That's our gate. Open the combination lock, drive through, then close the gate behind you (last vehicle if in convoy). Take your first hard right, then left onto the main gravel entrance road again. Follow that past the brown pole barn all the way to the shelter. That's our campsite.

From Overland Park: Take I-435 Around town like you're going to the airport, then merge onto I-29 N, and follow steps 3-7 above.

Schedule

Saturday, September 24, 2011

- 0930 Gather at Colonial Quivira Campus
- 1000 Park-goers depart for Worlds of Fun (Carpool!! See below)
- 1000 Others depart for Platte Falls Conservation Area (see map)
- 1045 Arrive WOF or Platte Falls CA
- 1300 Lunch by Patrol
- 1845 Rally by Patrol at WOF entrance
- 1900 Depart Worlds of Fun to return to Platte Falls CA
- 1930 Arrive campsite, begin evening meal
- 2200 Lights out

Sunday, September 25, 2011

- 0730 Wake up/ Breakfast/clean-up
- 0830 Patrol Time
- 1100 Worship Service
- 1130 Departure